

**NavMonPc**  
**User's Guide**  
**Supplement**

**Version 1.11 Update, October 25, 2011**

**Copyright 2011, Paul M. Elliott**

## Contents

About This Document.....	3
Disclaimer and Warning.....	3
Changes Since Version 1.10 .....	3
NMEA Generation: MWV Apparent Mode .....	4
AIS Target List.....	5
For More Information.....	6

## About This Document

This document is a supplement to NavMonPc User's Guide Version 1. It covers the changes to NavMonPc introduced between Version 1.10, and Version 1.11

## Disclaimer and Warning

NavMonPc is a work in progress, and almost certainly contains bugs, errors, and omissions. It may or may not be useful to you. I make no promises that it will not cause your computer to explode, but if it does, be assured that it was accidental and I am very sorry. However, I won't be sorry enough to pay for any damages: direct, incidental, or imaginary.

NavMonPc is the sole property of Paul M. Elliott, and is offered on a limited basis free of charge for non-commercial use.

I reserve the right to change the terms of this offer at any time.

NavMonPc is not a substitute for proper navigation and seamanship. I am not responsible for any damages caused by the use (or mis-use) of NavMonPc.

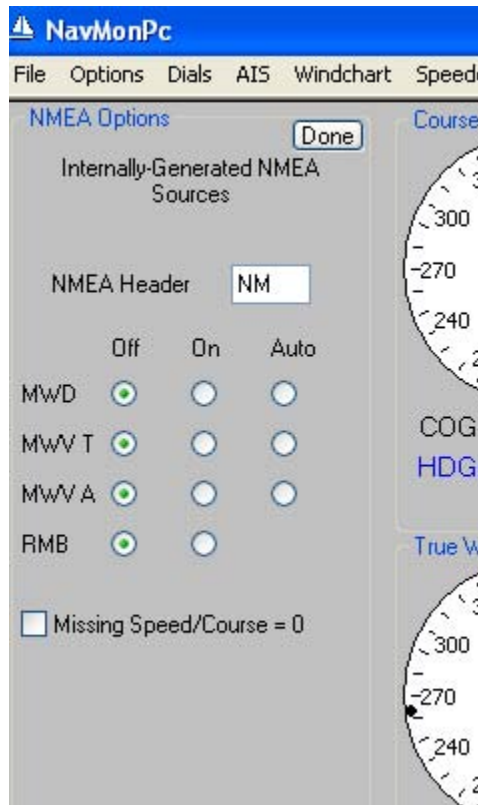
By installing and/or running NavMonPc you are agreeing to the above disclaimer and warnings.

## Changes Since Version 1.10

- NavMonPc v1.11
  - Added relative MWV NMEA generator (already had true variant).
  - Added AIS target list

These new features are described below.

## NMEA Generation: MWV Apparent Mode



NavMonPc has generators for several NMEA 0183 sentences (see the main User's Guide). There are now two MWV generator: the original one for the True Wind sentence variant, and a new one that delivers the Apparent Wind (also defined as Relative Wind). You can enable either or both of these.

MWV True contains values for the windspeed and direction (referenced to the vessel's bow), corrected for boatspeed.

MWV Apparent contains the windspeed and direction, referenced to the vessel's bow.

Note that in the "Auto" mode if any variety of MWV sentence is being received by NavMonPc, then neither of the MWV generators will be activated.

These generators will only function if NavMonPc is receiving sufficient data to determine True and/or Apparent wind.

## AIS Target List

The screenshot shows the 'AIS List' window in NavMonPc. The window title is 'AIS List' and it has a 'Done' button at the top right. The main area contains a table of active AIS targets. The table has five columns: Name, MMSI, Call, Range, and Bear. The 'AIS List' button is highlighted in the left sidebar. The table is sorted by range, with the nearest targets at the top.

Name	MMSI	Call	Range	Bear
Own Ship, Current Position	0		0 Ft	000°
HARBOR PRINCESS	366975750	WCX8036	668 Ft	348°
CALIFORNIAHORNBLOWER	366961920	WDB8632	738 Ft	238°
OVERSEAS LOS ANGELES	367134000	WABS	1.34 NM	305°
OLD BLUE	366981360	WXM5680	1.34 NM	283°
DELTA DEANNA	366998410	WCZ2977	1.34 NM	303°
ROYAL STAR	366985290	WCY6432	1.46 NM	094°
HARBOR QUEEN	366975740	WCX8035	1.49 NM	054°
ZELINSKY	366985330	WCY6433	1.49 NM	015°
ISLANDER	367083670	WDC8230	1.57 NM	072°
LYNN MARIE	366919770	WDB6192	1.69 NM	013°
ORION VOYAGER	308777000	C6MC5	1.72 NM	016°
HARBOR EMPEROR	366985270	WCY6430	1.89 NM	077°
ALCATRAZ FLYER	367338290	WDE3382	2.12 NM	101°
MILLENIUM FALCON	366978720	WCZ8082	2.25 NM	099°
PILOT BOAT DRAKE	367169840	WDD6217	2.57 NM	108°
SOLANO	366950020	WDB7930	2.81 NM	110°
MARIN	366969980	WZC8518	2.82 NM	112°
9/12/2011 11:04:25 PM	-1	0	3.27 NM	329°
ESCAPE	366814870	WDA4947	3.35 NM	010°
BETTY L	366969450	WBC6570	3.78 NM	128°

NavMonPc now provides a spreadsheet-format listing of all active AIS targets. To show this list, click the **AIS List** button (just under the **Options** and **Guard Zone** buttons). This list is a snapshot of the current targets – to refresh the list, click the **AIS List** button again. To return to the graphic AIS display, click the **Done** button at the top-right of the AIS List window.

By default, this list is sorted by range; the nearest targets are at the top of the list. Click on the various column headers to select ascending or descending sorting on the column. The selected sorting option is saved and restored on program close and open.

Name	MMSI	Call	Range	Bearing	CPA	TCPA	Latitude	Longitude	Course	Speed	Type	Status	Dest
Dorn Ship, Current Position	0	0 Ft	0.0 Ft	0.0 Ft	00h:00m:00s	37° 48.862' N	122° 26.902' W	148° T	6.6 kt		Reserved	Under Way using engine	DATA BY RAPIDAI
BARCEL PERROS	367516880	WDC0627	0.48 NM	148° T	957 Ft	00h:00m:04s	37° 48.400' N	122° 26.780' W	102° T	0.0 kt	Reserved	Under Way using engine	DATA BY RAPIDAI
HARBOR PRINCESS	366975750	WCA0806	0.77 NM	280° T	0.17 NM	-1h:56m:59s	37° 48.990' N	122° 27.880' W	273° T	10.2 kt	Passenger	Under Way using engine	HUS SFO BR
DELTA DEANNA	36698410	WC2377	0.33 NM	330° T	0.17 NM	-1h:30m:43s	37° 51.643' N	122° 28.982' W	080° T	0.0 kt	Waypoint	0	0
ORION VOYAGER	308777000	CRMSX	2.02 NM	036° T	0.20 NM	-1h:44m:50s	37° 50.562' N	122° 25.423' W	080° T	8.9 kt	Tanker, Carrying O/G, etc	Under Way using engine	DATA BY RAPIDAI
LYNN MARIE	366819770	WDA8193	1.85 NM	034° T	0.24 NM	-1h:45m:38s	37° 50.479' N	122° 25.523' W	080° T	9.0 kt	Tug	Under Way using engine	DATA BY RAPIDAI
ESCAPE	366814870	WDA4947	3.51 NM	011° T	0.51 NM	-1h:40m:32s	37° 52.352' N	122° 26.062' W	230° T	10.3 kt	Passenger	Under Way using engine	DATA BY RAPIDAI
CALIFORNIAHORNBLÖWE	366961920	WOB8842	0.44 NM	099° T	0.45 NM	-1h:58m:56s	37° 48.796' N	122° 26.339' W	054° T	5.7 kt	Passenger	Under Way using engine	DATA BY RAPIDAI
HARBOR EMPEROR	366985270	WCA8440	2.30 NM	092° T	0.54 NM	00h:26m:12s	37° 48.788' N	122° 24.133' W	190° T	6.6 kt	Passenger	Under Way using engine	DATA BY RAPIDAI
OVERSEAS LOS ANGELES	367134000	WAB8	1.33 NM	343° T	0.85 NM	-1h:50m:23s	37° 50.122' N	122° 27.444' W	051° T	10.9 kt	Tanker	Under Way using engine	RCH 9 SAN FRANCISCO
OLD BLUE	366981360	WXM5480	0.97 NM	299° T	0.67 NM	-1h:59m:14s	37° 49.386' N	122° 27.875' W	079° T	7.3 kt	Passenger	Under Way using engine	<HUS SFO BR
DELTA DEANNA	36698410	WC2377	1.30 NM	338° T	0.88 NM	-1h:55m:40s	37° 50.964' N	122° 27.515' W	051° T	10.8 kt	Tug	Under Way using engine	HARBOR_ASSIST TUG

Note that the AIS List expands to fill the screen if the NavMonPc window is enlarged.

The contents of the AIS List can be saved as a tab-delimited file by clicking the **Save** button at the top of the AIS List window.

Name	MMSI	Call	Range	Bearing	CPA	TCPA	Latitude	Longitude	Course	Speed	Type	Status	Dest
Dorn Ship, Current Position	0	0 Ft	0.0 Ft	0.0 Ft	00h:00m:00s	37° 48.862' N	122° 26.902' W	148° T	6.6 kt		Reserved	Under Way using engine	DATA BY RAPIDAI
BARCEL PERROS	367516880	WDC0627	0.48 NM	148° T	957 Ft	00h:00m:04s	37° 48.400' N	122° 26.780' W	102° T	0.0 kt	Reserved	Under Way using engine	DATA BY RAPIDAI
HARBOR PRINCESS	366975750	WCA0806	0.77 NM	280° T	0.17 NM	-1h:56m:59s	37° 48.990' N	122° 27.880' W	273° T	10.2 kt	Passenger	Under Way using engine	HUS SFO BR
DELTA DEANNA	36698410	WC2377	0.33 NM	330° T	0.17 NM	-1h:30m:43s	37° 51.643' N	122° 28.982' W	080° T	0.0 kt	Waypoint	0	0
ORION VOYAGER	308777000	CRMSX	2.02 NM	036° T	0.20 NM	-1h:44m:50s	37° 50.562' N	122° 25.423' W	080° T	8.9 kt	Tanker, Carrying O/G, etc	Under Way using engine	DATA BY RAPIDAI
LYNN MARIE	366819770	WDA8193	1.85 NM	034° T	0.24 NM	-1h:45m:38s	37° 50.479' N	122° 25.523' W	080° T	9.0 kt	Tug	Under Way using engine	DATA BY RAPIDAI
ESCAPE	366814870	WDA4947	3.51 NM	011° T	0.51 NM	-1h:40m:32s	37° 52.352' N	122° 26.062' W	230° T	10.3 kt	Passenger	Under Way using engine	DATA BY RAPIDAI
CALIFORNIAHORNBLÖWE	366961920	WOB8842	0.44 NM	099° T	0.45 NM	-1h:58m:56s	37° 48.796' N	122° 26.339' W	054° T	5.7 kt	Passenger	Under Way using engine	DATA BY RAPIDAI
HARBOR EMPEROR	366985270	WCA8440	2.30 NM	092° T	0.54 NM	00h:26m:12s	37° 48.788' N	122° 24.133' W	190° T	6.6 kt	Passenger	Under Way using engine	DATA BY RAPIDAI
OVERSEAS LOS ANGELES	367134000	WAB8	1.33 NM	343° T	0.85 NM	-1h:50m:23s	37° 50.122' N	122° 27.444' W	051° T	10.9 kt	Tanker	Under Way using engine	RCH 9 SAN FRANCISCO
OLD BLUE	366981360	WXM5480	0.97 NM	299° T	0.67 NM	-1h:59m:14s	37° 49.386' N	122° 27.875' W	079° T	7.3 kt	Passenger	Under Way using engine	<HUS SFO BR
DELTA DEANNA	36698410	WC2377	1.30 NM	338° T	0.88 NM	-1h:55m:40s	37° 50.964' N	122° 27.515' W	051° T	10.8 kt	Tug	Under Way using engine	HARBOR_ASSIST TUG

## For More Information

See the NavMonPc website: [www.NavMonPc.com](http://www.NavMonPc.com)

Email: [info@NavMonPc.com](mailto:info@NavMonPc.com)

Join the Yahoo NavMonPc discussion group: <http://tech.groups.yahoo.com/group/NavMonPc/>